

# Guidelines

*www.zetasassi.net – Zetasassi with a click!*

---

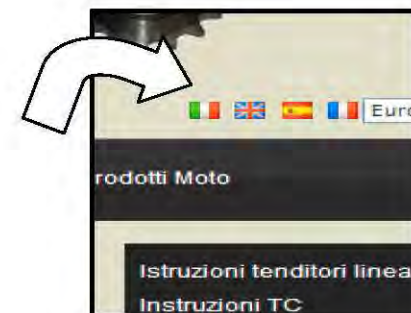
Welcome in Zetasassi.net, the website made for you!

These guidelines have the aim to help you with our new website so have a nice navigation!

---

First of all we have to chose our language using the pertaining flag on the right of the screen

1. Product research;
2. Read the item features;
3. How to download the technical drawings;
4. **Catalogue 2013;**
5. Find the right product for a specific need;



# Guidelines

www.zetasassi.net – Zetasassi with a click!

## Product research:

for Sections  
for Product

### Departments

- A) LINEAR AUTOMATIC TENSIONERS
- B) ROTARY AUTOMATIC TENSIONERS
- C) ROTARY TENSIONERS
- D) ADJUSTABLE

The screenshot shows the Zetasassi website home page. On the left, there is a navigation menu with sections for 'Log in', 'Cerca', 'Catalogo', and 'Reperti'. The main content area features the Zetasassi logo and a call to action: 'Registrali subito per richiedere preventivi'. On the right, there is a 'Products' list with categories: Aa) TO, Aa) TO INOX, Ab) TA, Ab) TA INOX, and Ac) NT. A large orange arrow points from the 'Departments' list to the 'Log in' section, and another orange arrow points from the 'Products' list to the 'Reperti' section.

The screenshot shows a product page for an 'INOX CHAIN TENSIONER TO3 KU oval head (self lubricating sliding bushes) Newton250:450'. The page includes a product image, a list of features (NEWTON: 250-450, CHAN: 1"X17mm(16B1) SIMPLE, Quantity: 1"X x 3/4"(20B1) SIMPLE, etc.), and an 'Add to wish list' button. Below the product image, there are social media sharing options (Facebook, Twitter, LinkedIn) and a 'Print' button. A large orange arrow points from the 'Products' list to this product page.

Once we have found our product we should choose its features such as the chain pitch.

# Guidelines

*www.zetasassi.net – Zetasassi with a click!*

of **Asi TO INOX**



NEWTON: 250-450

CHAIN: 1"X17mm(16B1) SIMPLE

Quantity:

[Request quote](#)

[Add to wish list](#)

Send us a quotation request, the system will ask you a minimum quantity 100, but it is possible to use this function also for lower quantity, follow the instructions please.

[Share with Friends](#)

[Pin it](#)

To meet all your needs for every products there is a wide range of pictures.

Have a look to all of them!

It is enough to put the mouse pointer on the picture.

For the ZOOM click on the picture.



## Description

INOX CHAIN TEN  
bushes) Newton2

# Guidelines

www.zetasassi.net – Zetasassi with a click!

## Read the item features

We offer to you a wide range of information:

The schedule at the bottom of each description, the item code summary, the Newton and all the information for a correct choice of the item.



If you put the mouse pointer on the item code you can see a preview of the 3D drawing that you can download with just a click in PDF version.

Cod. & (pdf)	File 3D&2D	NEWTON	CHAIN	Kg	Price
<u>TD3015N0XKU</u>				010	
TD301145W0XKU				010	
TD301125N0XKU				010	
TD30A5A005W0X				010	
TD30A5A1005W0				010	
TD30A5A1205W0				010	

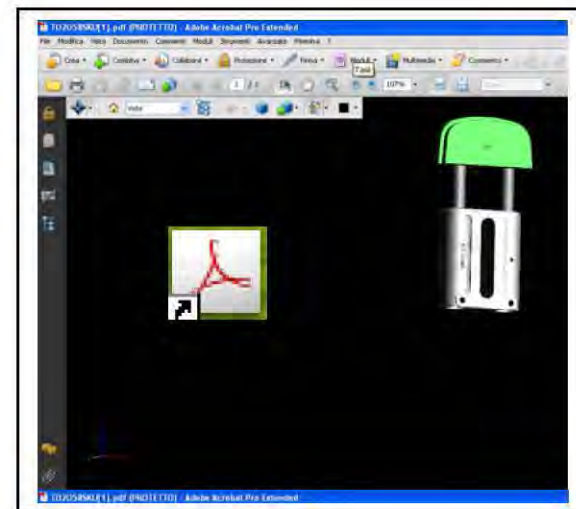
atasheet

FO KU

downloads

Web drawings

↓ CAT&I (QUIE PAIRF - PDF 3D) (3.781 KB)





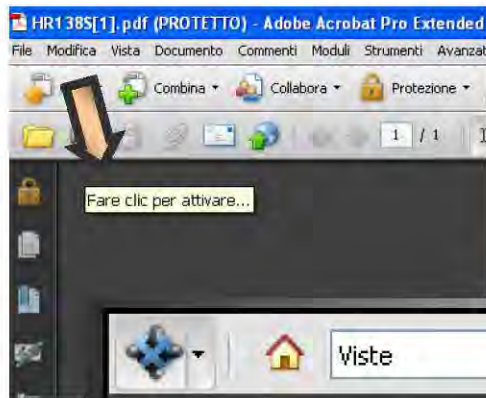
# Guidelines

*www.zetasassi.net – Zetasassi with a click!*

Using the PDF you can see all the product features:

- to make wider the product;
- orient the item;
- see each side;
- see all the internal components;

To be able to do that it is necessary to active the quick bar; as soon as you open the PDF you should click on the writing “click to activate” (Fare clic per attivare.....)



The bar allows us to modulate the drawing, to choose the positioning, the view, to check all the components, to modify the brightness and to choose our favourite colour.



Rotation



Default view

Views



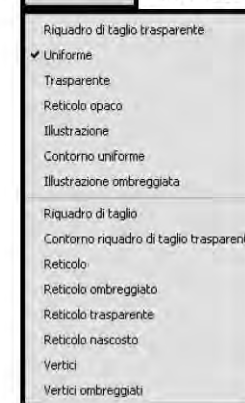
Type of screening



Colours



Cropping frame



Light



# Guidelines

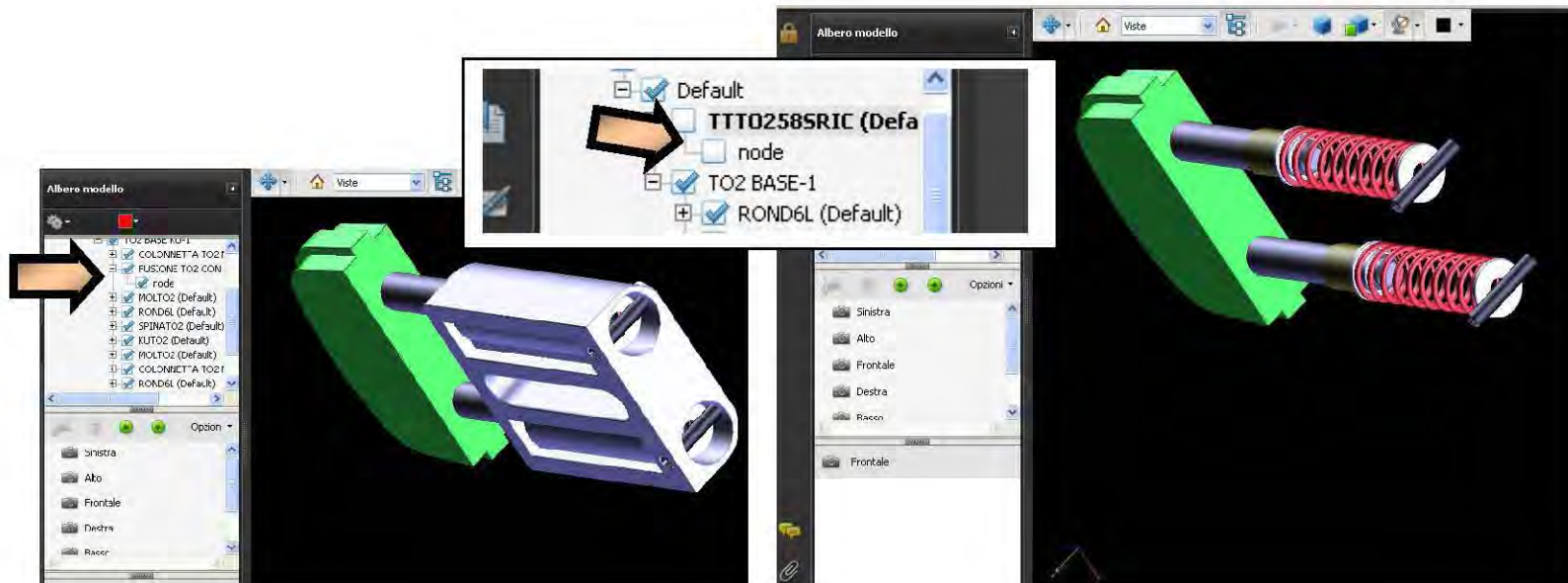
[www.zetasassi.net](http://www.zetasassi.net) – Zetasassi with a click!

## Which are the product elements?

The drawing model tree allows us to see the product bill.  
We can easily see all its elements and so we are able to find in a quick and easy way the spare parts.



Activate/Deactivate a drawing model tree



# Guidelines

www.zetasassi.net – Zetasassi with a click!

## How to download the technical drawings? - method 1

Our technical drawings are available:

Size	Extension		
2D	dwg	dxg	
3D	sat	step	x_t

We can download them from the schedule at the bottom of each item:  
1 click on the description concerning the 3D&2D file (*step\_sat\_x\_t\_dwg\_dxg*)

Tabella prezzi e disponibilità



Cod. & (pdf)	File 3D&2D
T02T58S	step sat x_t dwg dxg
T02T58D	step sat x_t dwg dxg
T02T58T	step sat x_t dwg dxg
T02T34S	step sat x_t dwg dxg
T02T34D	step sat x_t dwg dxg
T02T34T	step sat x_t dwg dxg
T02T18	step sat x_t dwg dxg
T02T10	step sat x_t dwg dxg
T02TASA50S	step sat x_t dwg dxg
T02TASA50D	step sat x_t dwg dxg
T02TASA50T	step sat x_t dwg dxg
T02TASA60S	step sat x_t dwg dxg
T02TASA60D	step sat x_t dwg dxg
T02TASA60T	step sat x_t dwg dxg



# Guidelines

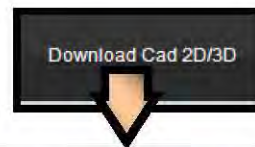
www.zetasassi.net – Zetasassi with a click!

## How to download the technical drawings? - method 2

Our technical drawings are available:

Size	Extension		
2D	dwg	dxg	
3D	sat	step	x_t

From the menu:



Home Nuova Dove siamo Chi Siamo Contatti Rivenditori Download Cad 2D/3D Carrello Prodotti Voto

### I miei dati

Documenti  
Preferiti  
Newsletter  
Informazioni Privacy

### Login

Nome   
Cognome   
Password   
Login

Passwörd clientinale?  
Registret

### Cerca

Tutti i reparti   
Cerca

## Download Cad 2D/3D

Qui potete trovare tutti i disegni cad 2D e 3D dei nostri prodotti.

- 2D : *dwg* , *dxg*
- 3D : *pdf3D* , *sat* , *step* , *x\_t*

Per l'utilizzo corretto di questo modulo di ricerca bisogna avere il codice esatto del prodotto .  
Scegliere il tipo di file che si desidera scaricare con l'apposita filto, il sistema vi avrà coperto un'immagine del prodotto del disegno che state per scaricare . basta poi cliccare o sull'immagine o sulla descrizione di file a fianco nella colonna (LINK) . dopo di che si aprirà un collegamento per il download del file...

**ATTENZIONE :** Per scaricare i file *dwg* , *dxg* , *sat* , *step* , *x\_t* .  
Deve avere l'autorizzazione . se non l'avete contattateci e richiedetelo .  
[contine@zetasassi.net](mailto:contine@zetasassi.net) ...

**N.B.:** I dati per login al sito non hanno autorizzazione per i disegni cad  
I file pdf3D sono scaricabili liberamente.

cod   
file

### Istruzioni Ieridition linean

- Instruzioni TC
- Instruzioni TR
- Instruzioni RH
- Instruzioni ORENT
- Instruzioni TF & GA
- Info KU

### Prodotti

- Aa)TD
- Aa)TD INOX
- Ab)TA
- Ab)TA INOX
- Ac)NT
- Ac)MT INOX
- Ad)NTA
- Ad)NTA INOX
- Ae)ET

## Download Cad 2D/3D

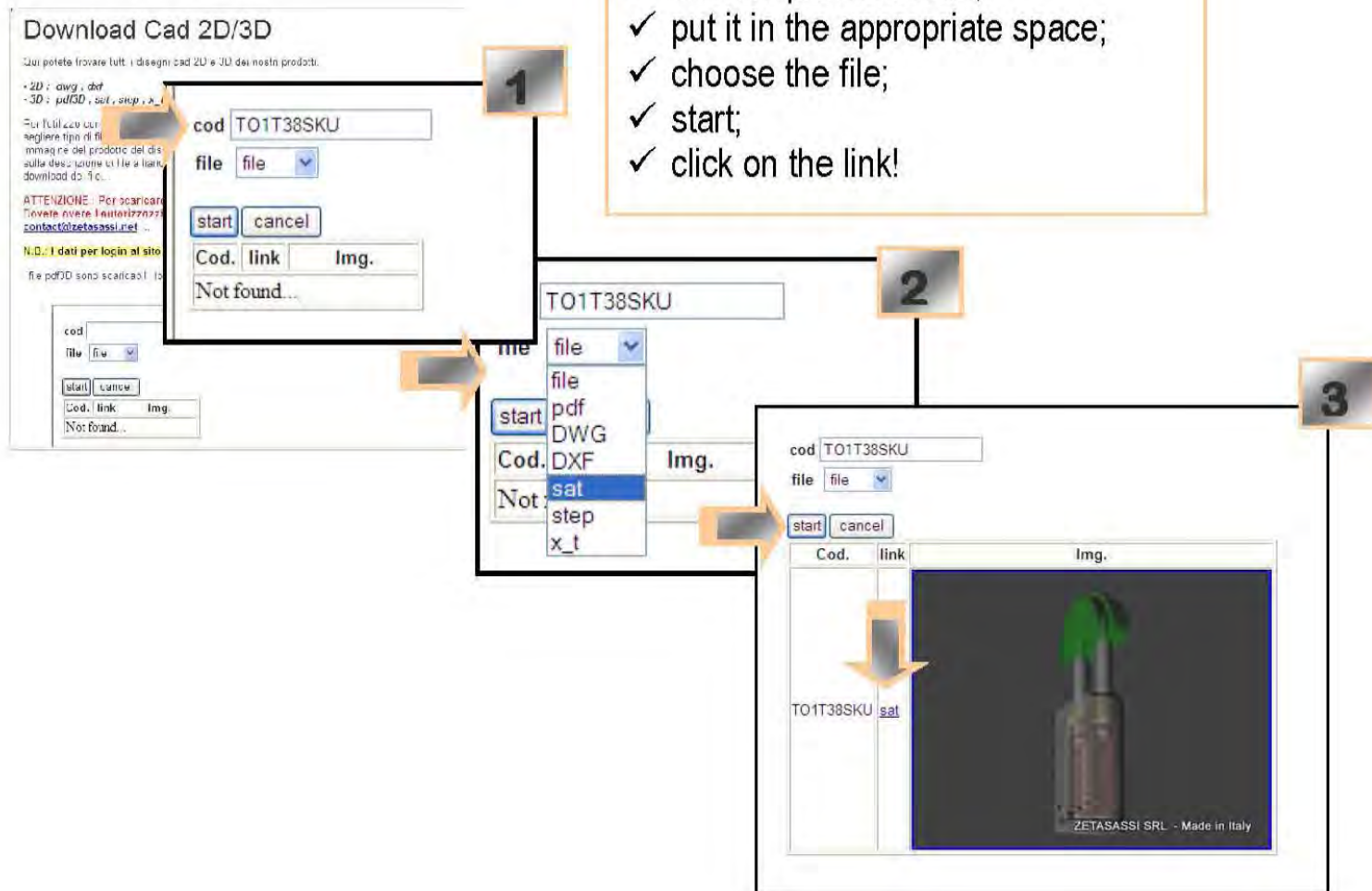


# Guidelines

www.zetasassi.net – Zetasassi with a click!

**N.B.:** For this quick procedure it is important to:

- ✓ find the product code;
- ✓ put it in the appropriate space;
- ✓ choose the file;
- ✓ start;
- ✓ click on the link!



# Guidelines

www.zetasassi.net – Zetasassi with a click!

## Catalogue 2013

### Downloads

- ↓ [CATALOGUE PAGE - PDF 3D](#) (3,761 KB)
- ↓ [CATALOGUE PAGE](#) (493 KB)

At the bottom of each item we can find the pertaining catalogue page link with or without 3D drawings.



Or you can choose to download the whole catalogue!



Catalogue 2013 (New)

To get a complete information we suggest you to download the instructions of the product group.



- Linear tensioners instructions
- TC Instructions
- TR Instructions
- RH Instructions
- ORIENT Instructions
- TF & GA Instructions
- Info KU

# Guidelines

*www.zetasassi.net – Zetasassi with a click!*

---

## **Find the right product for a specific need**

Zetasassi offers a wide range of products so you are able to choose the right product to fulfil your needs.

The main goal is to satisfy our customers so our technical office is at your disposal to give you all the information you may need.

Do not hesitate to contact us and we will help you to find the right product.

[contact@zetasassi.net](mailto:contact@zetasassi.net) - +39.0521.772808

*from Monday to Friday from 8:30 a.m. - 13:00 p.m. from 14:00 p.m. - 17:30 p.m.*

***We have multilingual staff.***